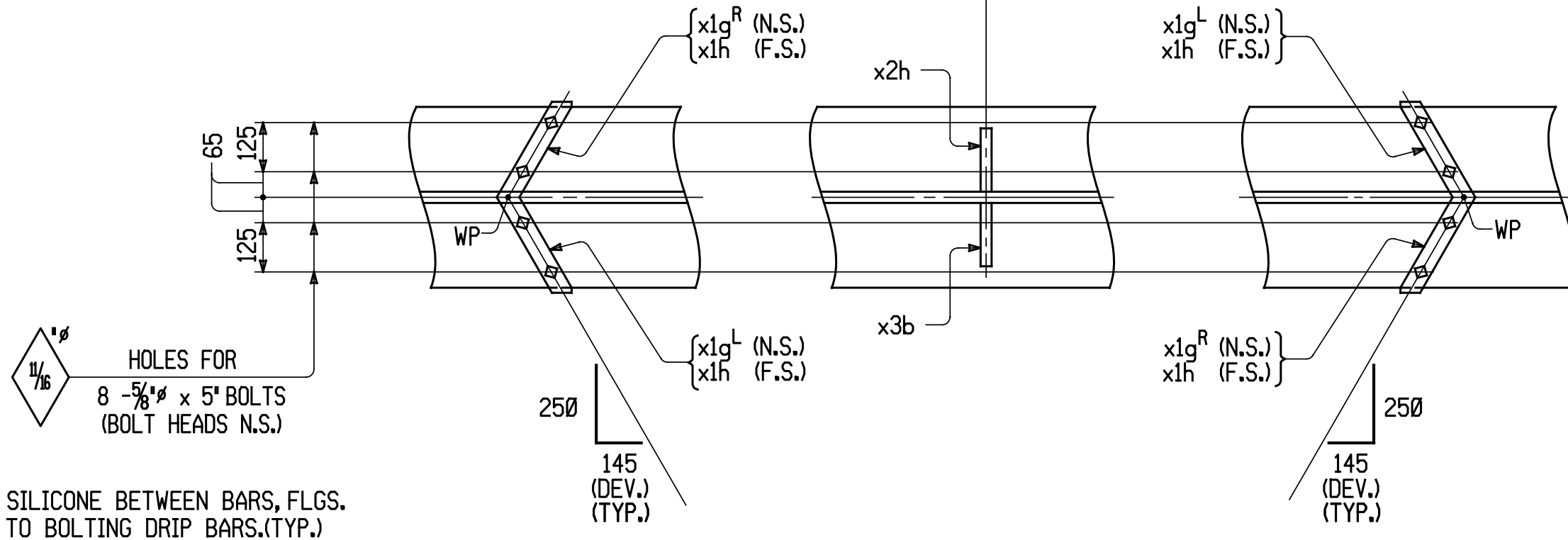


SPACING IS GIVEN ALONG WORKLINE (SEE CAMBER DIAGRAM)
 MEASURED ALONG TOP OF BOTTOM FLANGE

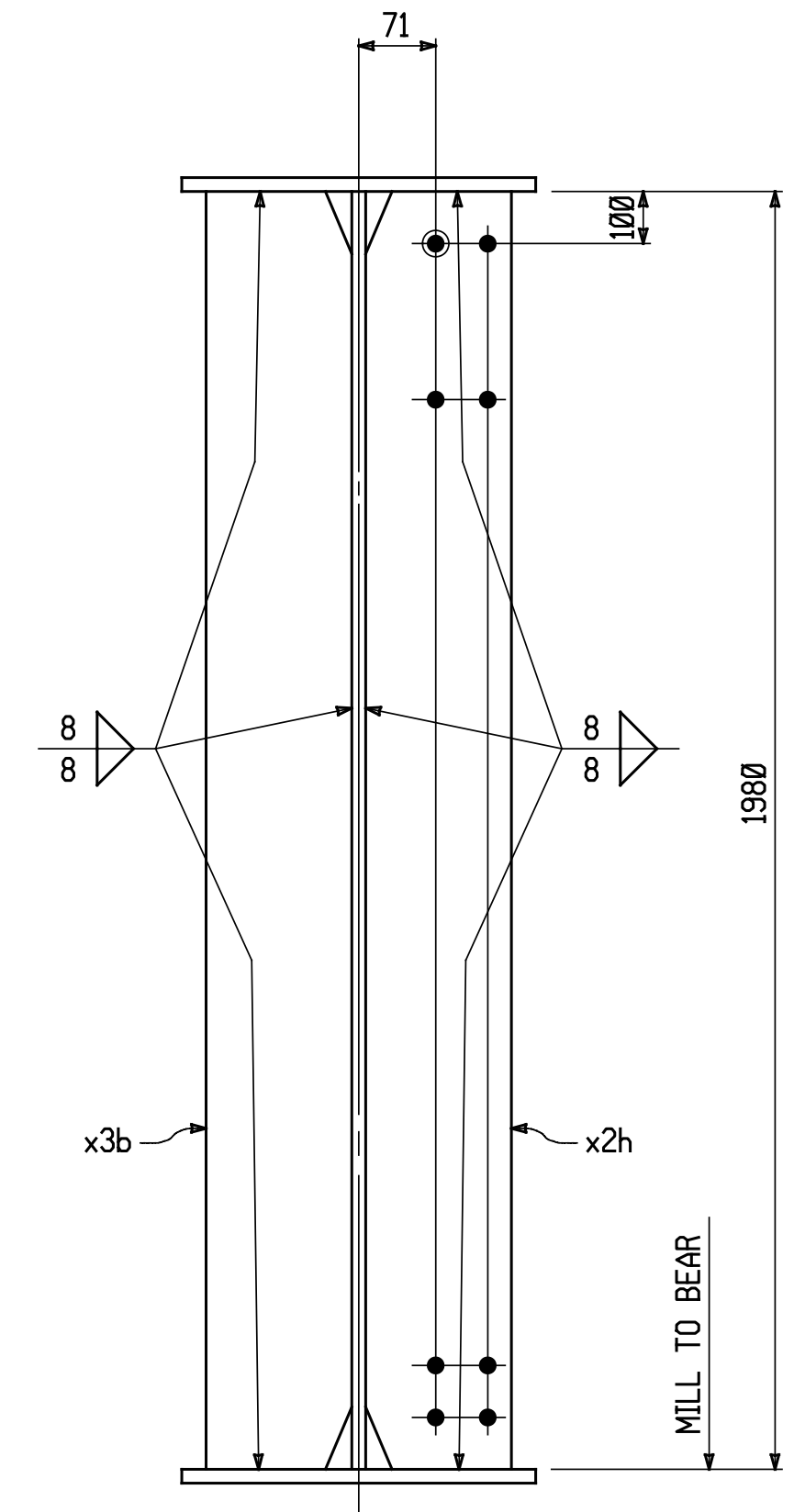
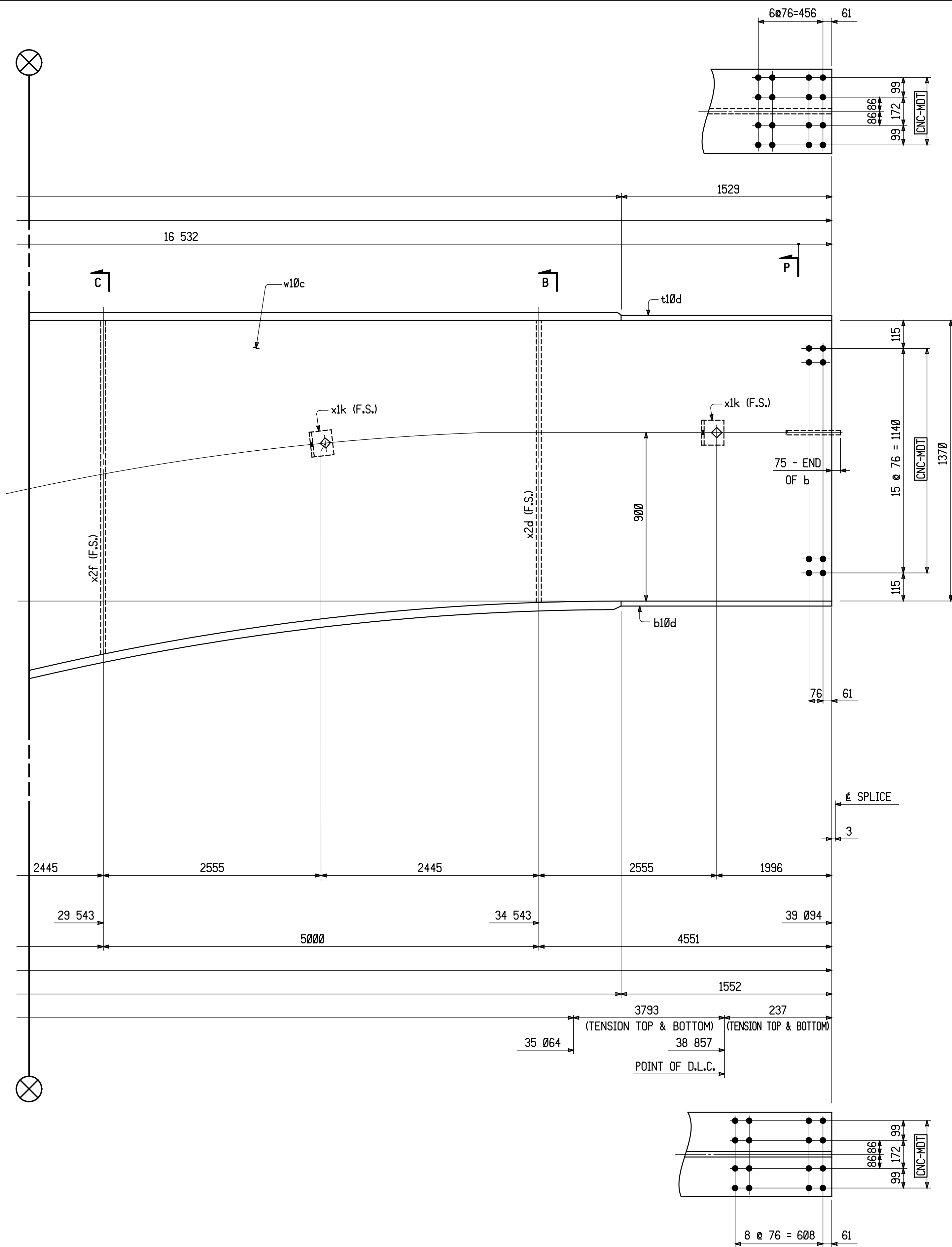
NOTE:
 PLACE BROWN SILICONE BETWEEN BARS, FLGS. & WEB PRIOR TO BOLTING DRIP BARS.(TYP.)



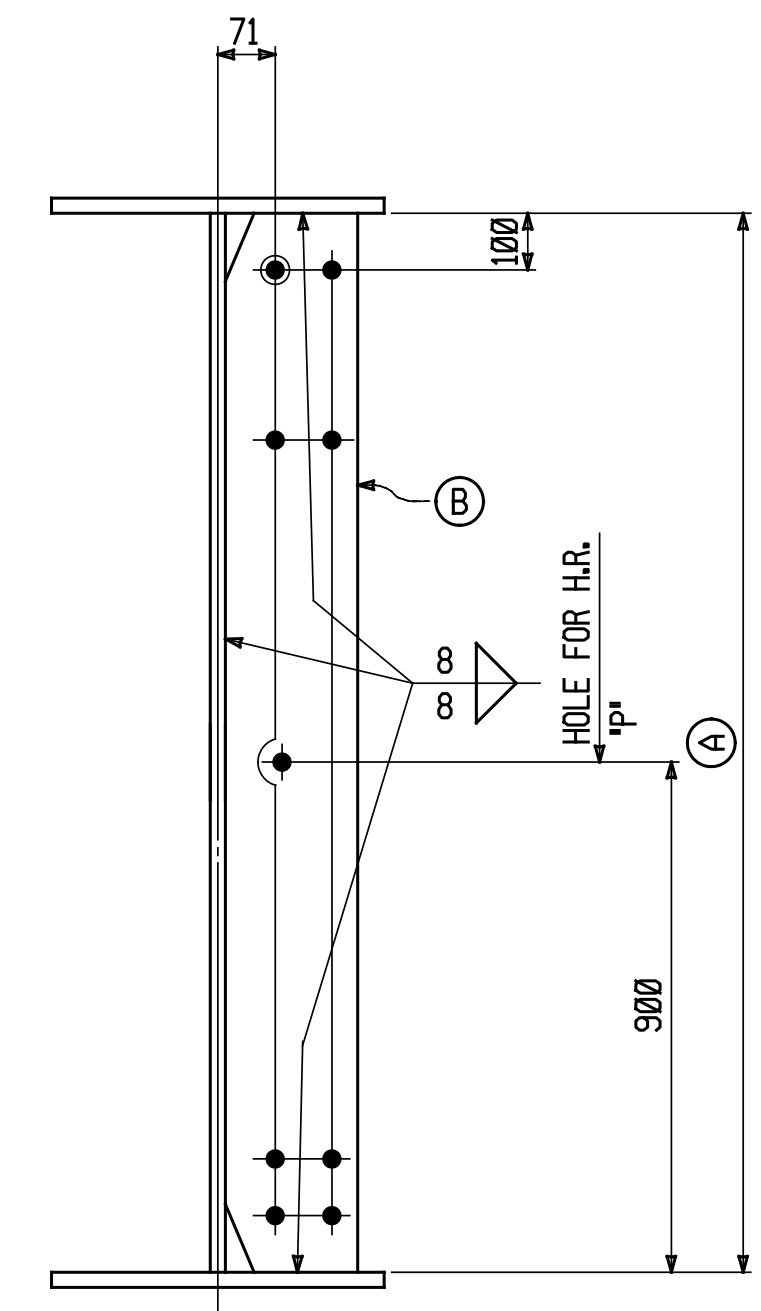
NO.	DATE	BY	REVISION
 UPSTATE DETAILING, INC. <small>Structural Detailing & Design</small>			P.O. BOX 389 BURNT HILLS, NY 12027 PH: (518) 399-0205 FAX: (518) 399-0403 info@useudi.com
			DRAWING TITLE
PROJECT No.:		FEDERAL AID No.:	
ENGINEER:			
CUSTOMER:			
PROJECT:			
HOLES:	PAINT:	DATE:	
BOLTS:	DR. BY:	JOB NO.:	
WELDS:	CHK. BY:	DWG NO.:	

WORK THIS DWG WITH DWG 10B.

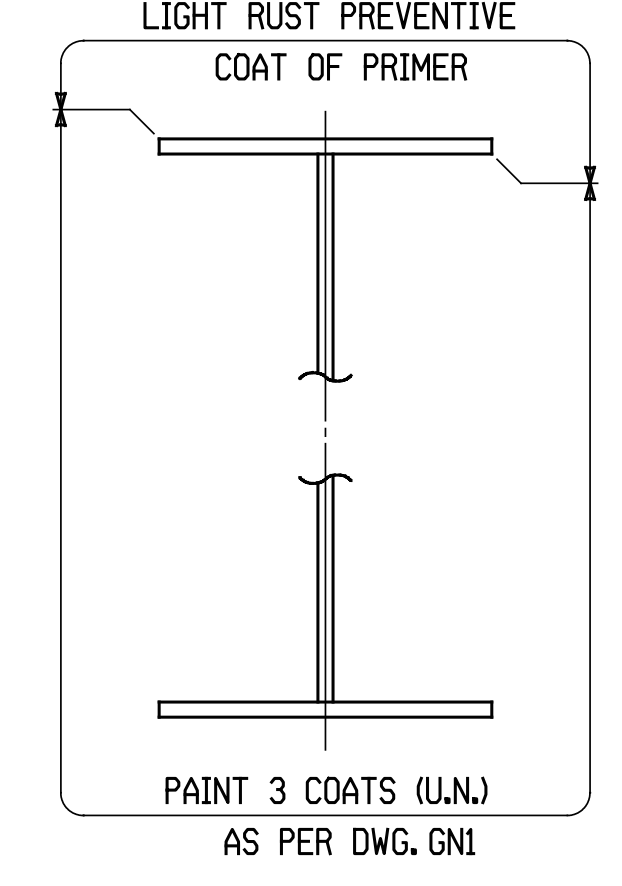
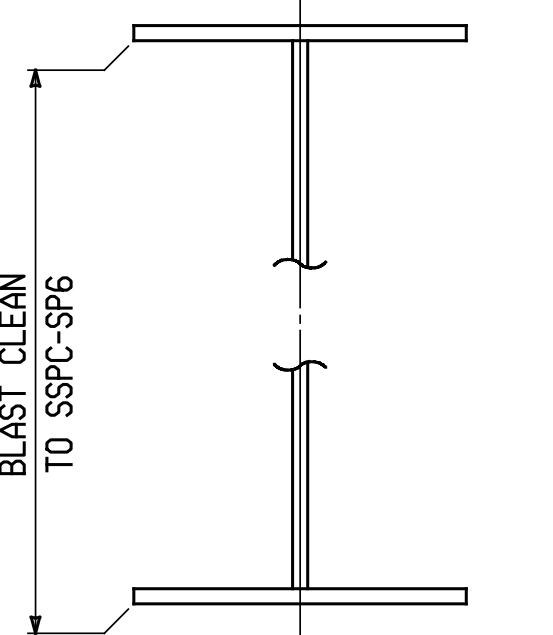
10/29/2013 8:46:18 AM C:\Users\jwebster\10AB.dgn



SECTION A



SECTION P
(FOR LENGTH SHOWN)



SECTION P1
(FOR LENGTH SHOWN)

NOTES:
 FOR GENERAL SHOP NOTES, SEE DWG. G01.
 FOR WEB CAMBER DIAGRAM, SEE DWG. WC2.
 (CVN) INDICATES CHARPY V-NOTCH TESTING REQUIRED IN CONFORMANCE WITH ASTM A673 USING THE 1st FREQUENCY. THE REQUIREMENTS FOR THE TESTS SHALL NOT BE LESS THAN 20 JOULES @ 5° C FOR MATERIAL UP TO 50mm THICK AND NOT LESS THAN 27 JOULES @ 5° C FOR MATERIAL OVER 50mm THICK.

	(A)	(B)
SECTION B	1388	x2d
SECTION C	1501	x2f
SECTION D	1716	x2g

WORK THIS DWG WITH DWG 10AB.

NO.	DATE	BY	REVISION
UPSTATE DETAILING, INC. <small>Structural Detailing & Design</small>			
P.O. BOX 389		BURNT HILLS, NY 12027	
PH: (518) 399-0205		FAX: (518) 399-0403	
info@useudi.com			
DRAWING TITLE: GIRDER - 10G2B (CONT'D)			
PROJECT No.:		FEDERAL AID No.:	
ENGINEER:			
CUSTOMER:			
PROJECT:			
HOLES:	PAINT:	DATE:	
BOLTS:	DR. BY:	JOB NO.:	
WELDS:	CHK. BY:	DWG NO.:	
		10B	